

RICOH PRIPORT JP8500

Digital Duplicator

Superior
Imaging
Performance
For Every
Professional
Demand



RICOH[®]



Super Speed & Versatility MEET To Maximize Your Productivity

Because your document production demands are continuous and varied, Ricoh has designed an exceptional high-performance digital duplicator that powerfully and reliably meets all of your high-volume output requirements—the advanced RICOH® Priport JP8500. At a lightning-fast 120 pages per minute, you'll speed through jobs on demand while also benefiting from superior 600 dpi image quality and paper handling.

Whether you're a print-for-pay organization, commercial printer, in-house corporate reprographics department, or facilities management firm, you'll reap the rewards of this cost-effective high-volume document printing solution. With the Priport JP8500, your workflow is enhanced with unmatched image quality and tight registration and with added flexibility when it comes to the types, weights and sizes of paper (up to 12.5" x 17.5") onto which you can output. Embedded PostScript® 3 connectivity tops off the many exciting features found in this latest edition to the digital duplicator line-up from Ricoh, the clear leader in digital office output solutions.

Additionally, fast and easy setup allows the JP8500 to be in production while most presses are still being prep'd to run. And if it's a clean work environment you're concerned about, the Ricoh JP8500 offers environmentally-friendly consumables that offer virtual white-glove operation.

120
Pages Per Minute

600 dpi
Resolution

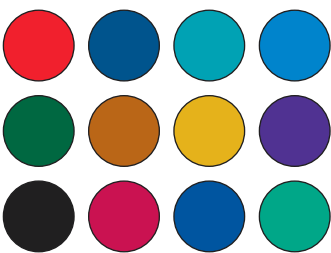
Advanced Engineering From Image To Output

With the ingeniously-designed yet easy-to-use Priport JP8500, no task is too complex, and no deadline is too unrealistic. Continually reliable and professional-quality printing is always at your fingertips thanks to these impressive engineering innovations:

Create The Perfect Image...

End your days of dealing with bad halftone reproduction, messy inks, and inconsistent images! **True 600 dpi resolution**, used both in the Priport JP8500's scanning and printing processes, **combined with 256 grayscale scanning**, ensures the sharpest edges and cleanest lines on all body copy and headlines, along with better defined halftones to satisfy the most discerning eye.

An outstanding new **Ink Delivery System** furthers image quality by providing: greater ink control for always-clear images; more economical printing thanks to reduced ink consumption; plus quality output that has ultra-fast dry time with no ink set-off. Earth-friendly



high-density inks (in black and brilliant colors) and refined **super-fine masters** deliver solid, evenly-distributed ink coverage

and better ink penetration. What's more, a simple change of your optional color cylinder expands your color palette and enables customized document creativity.

Control over your image is maximized no matter what type of original with: **Tint Mode**, which allows the shade of each ink color to be adjusted; **Letter/Photo Auto Separation, Letter & Photo Modes** for precision prints combining text and photographs; and **Pencil Mode** for accurate duplication of lightly-toned originals.

With Exacting Color...

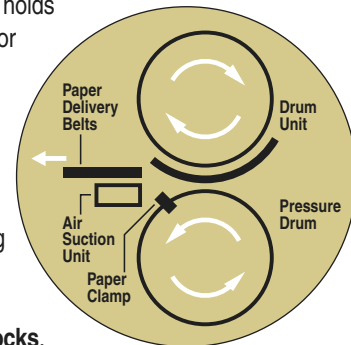
The Priport JP8500 makes selecting the right colors for your jobs easier than ever with **Ricoh's Digital Duplicator Custom Color Program**, which can provide duplicator ink in any PMS® color you choose. Whether you want to match a specific color for a logo, headline, or any other specialized need, the result is picture perfect...and custom ordering is made easy via fax, with delivery right to your door!



Print in either standard or custom colors on all stocks from bond to index in a full range of sizes.

For The Ultimate Output...

The Priport JP8500's advanced performance goes beyond mere imaging, with breakthrough paper-handling features that assure premium output. The **Dual-Cylinder System & Paper Clamping** ensure optimal registration as well as quieter operation. A pressure cylinder provides a larger paper press point for more solid fill, while the Paper Clamp Mechanism holds paper firmly as it is inked for superior imprint accuracy and registration. Intelligent friction pad technology provides separation resistance to avoid double feeding, and a new-and-improved air suction method helps avoid paper wrapping and enables smooth intake of **all stock thicknesses, from Bond to Index and including envelope stocks**.



Also all new with the JP8500 is an intuitive offset-like **Double Feed Detector** which optimizes printing reliability and professional-quality finished output. A built-in sensor emits light that continually calculates the degree of brightness as compared to previously-fed paper, thereby minimizing misfeeds, missing pages and time needed to check output.

In addition, you can run selective existing pre-printed four-color, foil-stamped and embossed/debossed originals because, as opposed to all copiers, there is absolutely no heating element inside the JP8500. The lack of a required heating element also significantly reduces energy consumption compared to high-speed copiers. In fact, the JP8500 uses as little as 4% of the power of a high-speed copier.

RICOH PRIPORT JP8500

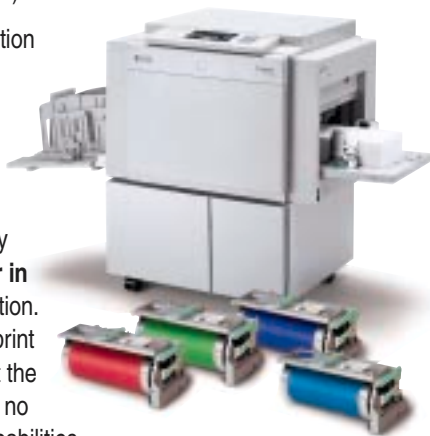
Digital Duplicator



Essential Options For Optimal Production

With the optional true **PostScript® 3 embedded Type 80 Controller interface**, the JP8500 can print from virtually any connected Windows, Macintosh or networked operating system, offering users an extraordinary range of control and ripping performance. In addition, the controller's built-in printer management solution, **SmartNetMonitor**, gives you real-time access to such information as paper settings, misfeed alerts, job history, security features and workflow management with other Ricoh Aficio® digital products located on your local area network (LAN).

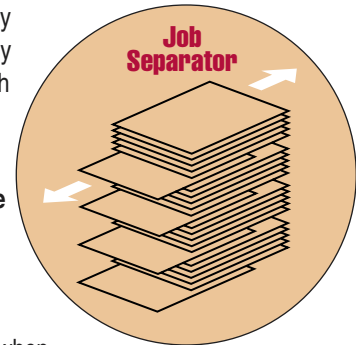
Your high-volume print production capabilities are heightened with the optional **Ricoh TC-II Digital Production Printer**, a complimentary unit that works in conjunction with the JP8500 to catapult productivity with the world's first **two color in one pass** duplicator reproduction. The TC-II contains two inline print cylinder chambers that accept the JP8500's color cylinders. With no scanner or master-making capabilities, the TC-II relies on the JP8500 to produce two separate masters to achieve full productivity. It offers exacting registration on two-color print output and also prints at a speedy 120 pages per minute, saving valuable time and money on your most critical multi-color jobs. Imagine...you can dramatically streamline production on that multi-part mailer by running two jobs simultaneously **at an incredible 240 pages per minute!**



Efficient Features For Seamless Workflow

The Ricoh Priport JP8500 satisfies your most complex and pressing document processing requirements with productivity-enhancing features that get the job done effortlessly:

- ▶ **Scan and store up to eight originals for instant retrieval and printing** to streamline job production. Scanned images are conveniently **auto-rotated** to match the direction of paper in the feed trays. Even an 11" x 17" original reduced to 8.5" x 11" is automatically scanned and rotated.
- ▶ The JP8500 recognizes the size of the original in the **Automatic Document Feeder** to ensure that the master is cut to the most efficient size saving up to 33% of the cost of masters!
- ▶ This smart system automatically detects the size of your original, **enlarging/reducing the image** to fit the paper size in the feed tray. Without the need for additional editing, two originals can be combined two-up, and a single original can be placed four-up.
- ▶ A **Job Separator** mechanically separates multiple print jobs by offsetting the top sheet of each preceding job.
- ▶ The JP8500 makes clear copies from bulky **bound-type originals** up to 11" x 17" paste-ups without secondary shadowing.
- ▶ **Energy Saver Mode** kicks in when the JP8500 is not in use, reducing power consumption by 85 percent compared to normal operation.
- ▶ Other user-friendly conveniences top off the JP8500's capabilities, like **User Codes** which let you track up to 20 different accounts; **9 Preset Job Settings** for easy access to constantly-run types of jobs such as forms; plus **Stamping, Overlay and Security Modes** for added versatility.



The Ricoh Priport JP8500 is the all-in-one productivity solution for all your high-volume, on-demand print production jobs. This advanced system provides any print-for-pay concern, central reprographics department, manufacturing or facilities management organization with extraordinary output for every need.

RICOH®

120

Pages Per Minute

600

dpi



The Automatic Document Feeder ensures that the master is cut to the most efficient size. This saves up to 33% of the cost of masters without using the optional short drum!



All operation keys are located on the Priort JP8500's control panel which prompts the operator through the selection of features while indicators keep the user informed of the system's operational status.



Adobe® PostScript® 3™

With the optional PostScript® 3 embedded Type 80 Controller interface, the powerful JP8500 can print from virtually any connected Windows, Macintosh or networked operating system.



The Priort JP8500 has a single master cylinder for a self-loading master process, and ink cartridges that load and remove quickly and neatly. The Master Disposal System is fully enclosed. The JP8500 alerts you when it's full — just slide out the cartridge, discard the used masters and replace.

RICOH PRIPORT JP8500



Digital Duplicator

The Ricoh Priport JP8500 brings a whole new dimension in image quality, document processing productivity and convenience to your high-production environment. Delivering professional output onto virtually any paper stock, in any color of your choice, at a super-fast 120 pages per minute, the JP8500 provides offset quality output while significantly enhancing your bottom line. For additional information, please visit www.ricoh-usa.com

Specifications

Mainframe

Priport JP8500 (EDP205701)

Configuration	Desktop Book Copying
Master Processing	Fully integrated digital duplicator
Pixel Density	600 dpi x 600 dpi
Printing Process	Dual cylinder system with clamp
Image Scanning	CCD with lens
Paper Handling System	Paper roller and clamp mechanism
Reduction Ratios	93%, 77%, 74%, 65%
Enlargement Ratios	121%, 129%, 155%
Zoom	50% - 200% in 1% increments
Image Mode	Letter, Photo, Letter/Photo Auto Separation, Tint
Original Sizes	Max: 12" x 17" (Platen) Min: 4.1" x 5.0"; Max: 11.6" x 34" (ADF)
Paper Sizes	Min: 2.8" x 5.8"; Max: 12.8" x 17.6"
Paper Weights	12.5 lb. bond to 110 lb. Index
Maximum Image Area	11.4" x 16.5"
Print Speeds	60, 75, 90, 105, or 120 ppm
Master Process Time	25 seconds
Paper Feed Tray Capacity	1,000 sheets
Paper Delivery Table Capacity	1,000 sheets
Optional ADF Original Capacity	50 sheets
Power Source	120V, 60Hz, 2.4A
Power Consumption	Max. 260 W
Print Counter	9,999,999
Master Counter	999,999
Noise Emission	58-64 dB
Dimensions (WxDxH)	56.5" x 27.5" x 23.0"
Weight	231 lbs.
Masters	255 L-size sheets per roll; 410 S-size sheets per roll
Master Run Length	More than 2,000 impressions
Master Disposal Capacity	65 to 100

Special Features

No-Waste Confidential Mode; No-Waste Quality Start Mode; Ink Blade Distribution Control; Electronic Vertical/Lateral Registration; Digitally Controlled PF Settings; 8-Page Storage and Recall Memory; Dual PF Friction Pad System; Skip Feed Mode; User Code Audit Mode; Economy Mode; Image Overlay; Tint Mode; Directional Magnification; Auto Image Rotation; Two Up Mode; Multi-Copy Modes (2, 4, 8, 16 in 1); Auto Separation, Line/Photo Mode; Auto Paper Size Detection; Auto Original Size Detection; Auto Background Correction; User Program Mode; Photo Mode; Editing; Class Mode (9 grades x 18 classes memory); Status Sheet Printout; SP Mode; "L" & "S" Auto-Cut Master; Shadow/Edges/Center Erase; Stamping Mode; Tapeless Job Separator; Auto Contrast Control; I/O Service Mode



Specifications and external appearance are subject to change without notice.

Printed in U.S.A. on recycled paper because Ricoh cares

Ricoh is a registered trademark of Ricoh Company, Ltd.
All other trademarks are the property of their respective owners. © Ricoh Corporation
Ricoh reserves the right to modify any standard ink choices without notice.

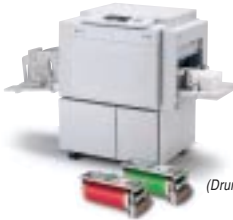
Optional Equipment

Accessories

DF-85 (EDP205693)
50 page capacity automatic document feeder



Platen Cover (EDP410779)



TC-II Production Printer (EDP205674)
Two color in one pass printing technology

(Drums not included)

Cabinet (001359MIU)

Dual door metal shown with caster rollers



NOTE: 001359MIU is for Mainframe
000783MIU is for TC-II

Color Cylinders (EDP205672/205671)



Integrated, hot-swappable master cylinder

NOTE: EDP205672 is "L" size
EDP205671 is "S" size

Consumables

JP8500 Ink Choices

Current Standard Colors



(Colors noted are approximations of actual inks)

Custom Colors

Customized PMS match colors available on demand



Ink and Masters

Ink paste and specialized master material is created specifically for use with the JP8500.

NOTE: EDP893107 is for HD Black ink
EDP893128 is for Master Material

Connectivity Options



UC5 (EDP205523)
External print controller for use with text documents

UC5e (EDP205522)
Embedded print controller for use with text documents



UC6 (EDP205524)
External print controller offering a full range of capabilities

Type 80 (EDP205705)

Embedded print controller offering total solution connectivity



Type 85 Editing Board (EDP205709)

Enables makeup functions for mainframe editing

NOTE: Additional Interface Board required when connecting the JP8500 with the following devices: UC5, UC5e and UC6.



Adobe® PostScript® 3™

OFFICIAL PRINTER, COPIER AND FAX OF THE PGA OF AMERICA



SOLUTION CONNECTIVITY

RICOH
Image Communication

Ricoh Corporation, Five Dedrick Place, West Caldwell, NJ 07006
Phone: (973) 882-2000 Website: <http://www.ricoh-usa.com>